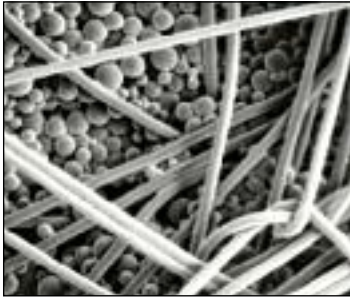


1000 SERIES

Style Reference: 1000 GN 000



- ▶ **Designed specifically for helicopter passengers**
- ▶ **European Aviation Safety Agency (EASA) approved**
- ▶ **Exceptional in-water performance and survivability**
- ▶ **Waterproof and breathable to improve passenger cabin comfort**
- ▶ **Inherently flame retardant material providing optimum protection against fire**
- ▶ **Enhanced thermal insulation using the latest nano-textile space technology**
- ▶ **New seals with superior performance, delivering greater flexibility and comfort over long wear periods**
- ▶ **Latest waterproof zip technology provides a lightweight, flexible and durable solution**



Enhanced thermal insulation and hygiene using the latest nano-textile space technology.

The new 1000 Series suit from Survival One has been designed specifically for helicopter passengers to provide the ultimate protection for personnel travelling over water.

Designed to exceed the requirements of the latest European aviation standards, the 1000 Series suit provides unsurpassed protection to the wearer in the event of an emergency.

The 1000 Series suit uses the very latest in technical textile technology to produce unequalled performance: waterproof, breathable and inherently flame retardant, yet stronger and more effective.

Using technology developed for the NASA space programme, offshore workers will benefit from enhanced insulation that regulates the microclimate inside the suit to improve thermal comfort and reduce thermal stress.

Hygiene is improved by the use of anti microbial nano-technology in the thermal liner.

The watertight seals at neck and wrist are stronger, more flexible and less prone to damage making them safer and more effective yet more comfortable to wear.

New waterproof zipper technology is used to effectively seal the suit that is more comfortable to use and wear.

But what does this mean to the wearer?

A suit designed to be the best technologically that addresses the needs of the wearer.

A survival suit that is specifically designed for helicopter passengers, not an adapted maritime suit.

A suit which is easier to don and more comfortable to wear.

A suit that provides optimum fit and performance to the wearer, designed to minimise trapped air thereby aiding movement and assisting escape in an emergency.

Most importantly a suit that provides the very best protection should the unthinkable happen.

